



Designer Sizing Sleeve

DESIGNER / EURO TWIST PEN SIZING BUSHING

This center bushing kit includes a 2 part sliding bushing with a set screw and Allen wrench. This upgrade will greatly simplify the process of turning and sizing the wood for the center band of the "Designer" Twist pen.

Both tip and cap bushings from your existing Designer / Euro bushing set will be used as usual. The Center Bushing is not used and will be replaced with this new center bushing.

Mounting The Blanks On The Mandrel (See diagram A)

Slide the longer cap bushing on the shaft first, then the shorter upper blank. Insert the 2 part sizing bushing assembly, narrow diameter first. Follow with the longer lower blank and then the shorter tip bushing. Adjust for spacing and lock the set up into the mandrel with the lock nut.

Turning The Blanks (See diagram B)

Loosen the set screw. Slide the bushing to the left side, flush with the wood. Lock in place. Turn upper and lower blanks down to the required profile using the bushings diameter as a guide. Sand the barrels down to the final diameter. Loosen the set screw and slide the bushing to the right. Lock it in place.

Pencil mark $7/32$ " line from the inside edge of the upper blank. Use a parting tool to cut a tenon down to the bushing diameter. Remove the wood up to the line. Be sure to keep a sharp square corner on the wood. Unscrew the set screw and slide the bushing to the left side, continue to remove wood from the tenon until the bushings slide over the tenon. This will insure a good fit of this center band.

DIAGRAM A

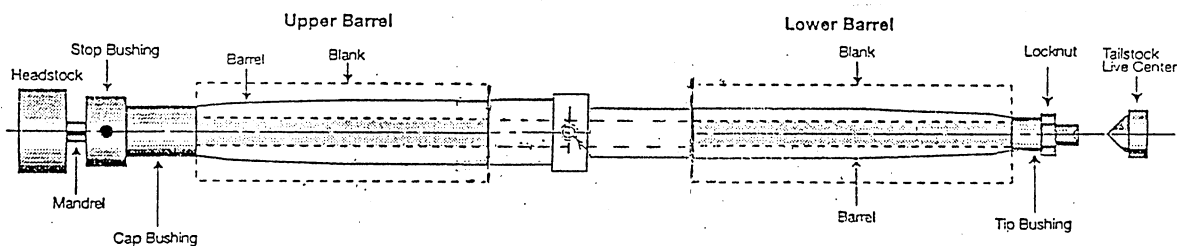


DIAGRAM B

